



ooma

Slaying your Monsters

INTEGRATED – EVERY DAY – EVERYWHERE

 PLATINUM **SOFTWARE**

# At last!

Affordable professional  
corporate system available to  
all! **All in one hub.**

INFO SHEET

CORE

PRODUCT



## INFO SHEET

# CORE PRODUCT

---

### **mobile app**

Conveniently upload docs and pictures, view profile, employee information, manage leave and staff data.

### **leave management**

Remotely submit leave requests with supporting documents. Seamlessly approve, control and monitor.

### **staff data management**

Store, maintain and manage all employee information. Arrange your own fields with a customised set-up.

### **document management**

Allows for uploading and downloading of any document assigned to an employee data.



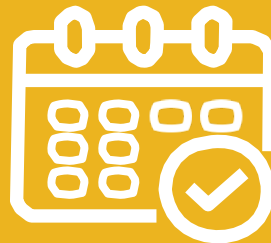
**INFO SHEET**

# **CORE PRODUCT**

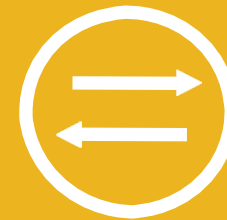
---



**secure access**



**calendar views**



**import and export**



**document control**



**dynamic reports**



**language of choice**

**INFO SHEET**  
**ADDITIONAL**  
**AVAILABLE**  
**MODULES**



## INFO SHEET

# ADDITIONAL AVAILABLE MODULES TEAM ENGAGEMENT

---



### surveys

Team leaders are able to obtain very helpful information from selected groups. Various surveys can be created at multiple timelines and to multiple groups.

### team engagement

Team leaders are able to send text, image and video messages to selected individuals or groups.

### mobile app

Upload docs and pictures, view profile, employee information, manage leave and staff data, all from the convenience of your device.

# ADDITIONAL AVAILABLE MODULES PAYMENT MANAGEMENT

---

## place orders

Processing a purchase order to a vendor (new or existing) and obtaining approval is seamless.

## staff claims and supplier payments

Placing payment requests are effortless, as well as obtaining approvals.





**INFO SHEET**

**INTEGRATED**

**MODULES**



INFO SHEET

# INTEGRATED MODULES

## PERFORMANCE DEVELOPMENT

---



### **set company and personal goals**

Ensure each team/team member is aligned with company goals and objectives at all levels. Also incorporate your own models into a comprehensive data collection point and maximize your views and insights on all staff. Aligned to the talent / skills development module.

### **track and assess**

Monitor and control progress and achievements. Manage recognitions with dynamic reports.

**INFO SHEET**

# INTEGRATED MODULES

## ONBOARDING / RECRUITING

---



### place and track applications

Ensure accurate and controllable process of identifying, attracting, interviewing, selecting, hiring and onboarding potential new employees or resources.

### document tracking

Monitor (and safekeeping) documentations and applicant progress. Including dynamic reports.



**INFO SHEET**  
**UPCOMING**  
**MODULES**





**INFO SHEET**

# UPCOMING MODULES

## PAYROLL DATA INTEGRATION

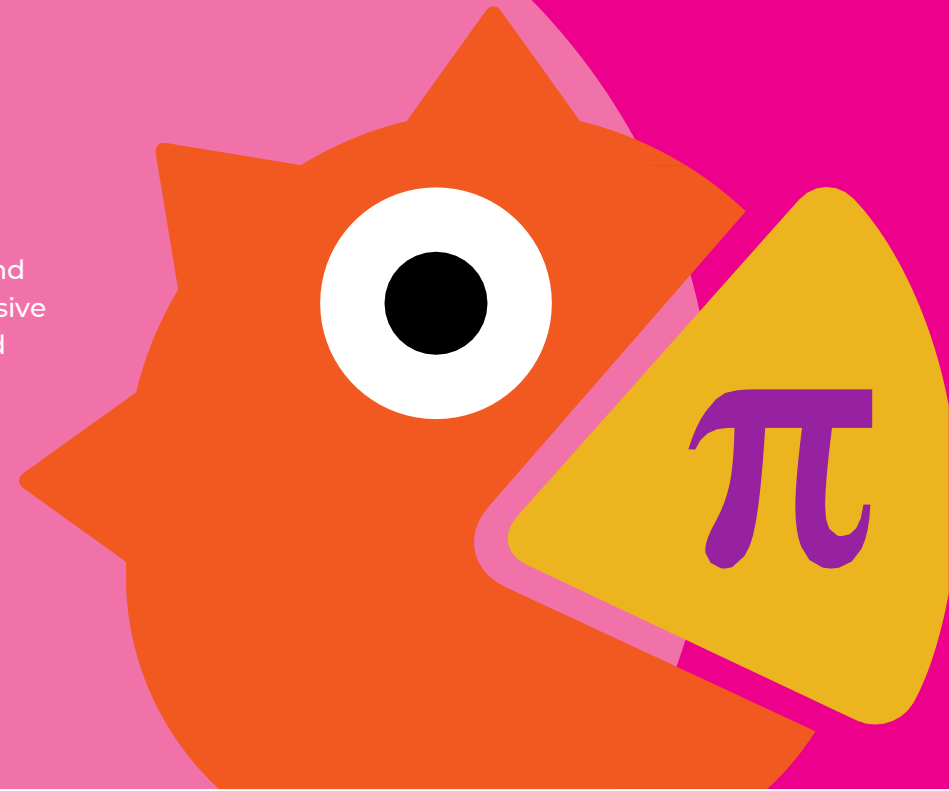
---

### **dynamic wage bill management**

Let dynamic reports and trend tracking enable you to manage all costs and opportunities.

### **integration with accounting**

Not another Payroll system but integrate all your payroll and employee data for comprehensive management views and record keeping.



**INFO SHEET**

**PRODUCT  
STRENGTHS  
AND SELLING  
POINTS**



## INFO SHEET



# PRODUCT STRENGTHS AND SELLING POINTS

## 1. scalable

No limits! Load as much information, types, fields, documents, departments or levels you need.

## 2. configurable

Set-up your company, fields, information and documentation to your preference. Get rid of the constraints where software determines these for you.

## 3. affordable

Now even small businesses can enjoy and afford the benefits of this corporate software.

## 4 dynamic reporting

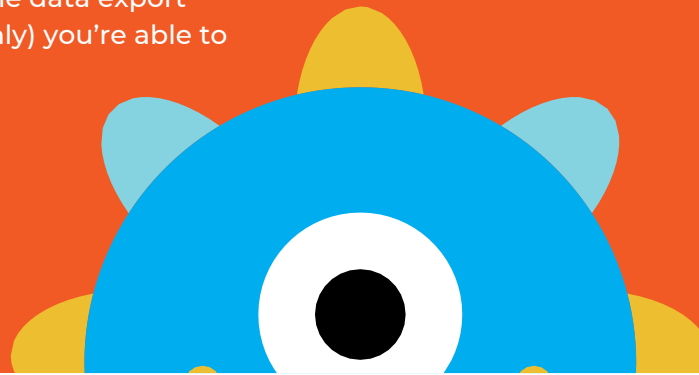
With dynamic reporting you have access to the dashboards you need. With multiple data export functionalities (authorised users only) you're able to utilise your data, your own way.

## 5. unique (how we compare to others)

Our software doesn't specialise in only one aspect of people management which would constrain your choice and ability to consolidate your information. That being said, our software is available at the same price-range of singular modular systems, but with the functionality of multiple corporate functionalities as opposed to our competitors who attempt to fulfil every function at extremely high costs – unviable to smaller businesses.

## 6. info, doc and data hub

It's your information hub! One place where you can monitor and control all your information and documentation.



## INFO SHEET

# PRODUCT STRENGTHS AND SELLING POINTS



### **7 one view / 360 view of staff**

Now you can view all relevant information about a person in one place. With integration to other systems, you enhance your ability to view all data and reports those systems provide, in a consolidated way.

### **8 secure access**

Strict access control to both the system itself and the features and information types exists. You can set this up as you'd like. (Two Factor Authentication is also available)

### **9. keep your favorite tools and systems**

This software provides you the ability to integrate your preferred tools or systems. You don't need to replace or lose those.

### **10. integrate IT**

In the planned future modules, we plan to integrate with most known systems that specialise in time management, performance and learning management and payroll systems.

### **11. access and share**

Access and share files from anywhere. Sync work and data with others seamlessly.

### **12. storage**

No space limits – no need to have to use your own hardware space.





## INFO SHEET

# PRODUCT STRENGTHS AND SELLING POINTS



### 13. loss and cost control

Prevent loss of company data with auto backups.  
Save on maintenance, hardware and electricity costs.

### 14. advanced tech

Give your company access to advanced technologies and  
adopt the newest trends.



**INFO SHEET**  
**PRICING**





# INFO SHEET PRICING

UNIT COSTS ARE EXPRESSED PER STAFF MEMBER PER MONTH (R/p/m)

MODULES	COMPANY SIZE (NUMBER OF STAFF)				
	MICRO 1-4	SMALL-MED 5-49	MEDIUM 50-249	LARGE *1 250-499	ENTERPRISE *1 500+
CORE: TEAM MANAGEMENT	40.00 12 M's Free	40.00	35.00	30.00	30.00
TEAM ENGAGEMENT	INCLUDED	INCLUDED	INCLUDED	INCLUDED	INCLUDED
PAYMENT MANAGEMENT	15.00	15.00	12.50	10.00	10.00
INTEGRATED MODULES					
PERFORMANCE DEVELOPMENT (via *3rd Int)	10.00	10.00	10.00	8.00	8.00
TALENT AND SKILLS DEVELOPMENT (via *3rd Int)	10.00	10.00	10.00	8.00	8.00
ONBOARDING / RECRUITING (via *3rd Int)	10.00	10.00	10.00	8.00	8.00
FUTURE MODULES					
PAYROLL DATA MANAGEMENT (only *3rd Int)	TO BE ANNOUNCED				

## INFO SHEET



# ADDITIONAL AVAILABLE MODULES PAYMENT MANAGEMENT

### notes

\*3rdInt : 3rd Party System fees are excluded from our pricing. Initial Integration cost is set-up on a case-by-case basis, depending on client requirements.

Subscription for the core system for Micro businesses, with staff < 5, is free for 12 months.

Total pricing will incorporate the above tier pricing structure; as an example, a medium-size company with 50-249 staff members will have a specific rate, and then a lower rate for larger companies.

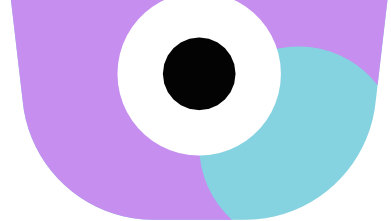
Non-Profit Organisations (NPOs) receive a 50% discount (Registration docs needed as proof).

\*1 Customised set-ups, corporate integrations and reports are available and different fee structures will apply.



**INFO SHEET**  
SOME OF  
THE MONSTERS  
WE SLAY





## INFO SHEET

# SOME OF THE MONSTERS WE SLAY

## WHAT HR PROBLEMS EXISTS?

---

### 1. i feel buried in HR tasks

Yooma provides significant time savings with its simplified, quick and easy-to-use features. Tasks are shared across the users and their responsibilities, helping you to focus more on outcome and less on admin.

### 2. too much paperwork

Yooma is geared for paperless environments and our web- and cloud-based solution enables control across multiple regions and countries.

### 3. cannot keep up with leave request and approvals

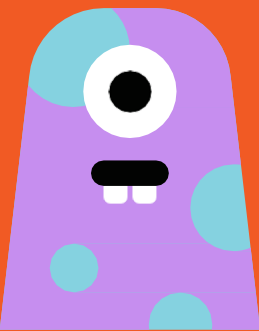
Yooma saves time and logs all interactions regarding leave requests. Formal approval structure can be self-configured.

### 4. i need all our people's info in one secure place

Yooma acts as an info hub for all your HR and staff related information and documentation. Where you control who can see what. Also, with dynamic reporting one can see all other related information about a person and teams, whether financials, personal details, contract and documentation, you name it.

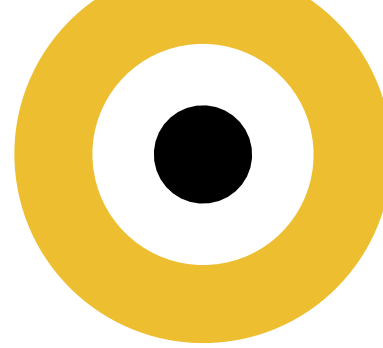
### 5. systems are too expensive (especially dollar based), I need a corporate system for my smaller business

Yooma are proudly South African and offer systems with corporate capabilities that local SME's can afford.



## INFO SHEET

# SOME OF THE MONSTERS WE SLAY



### **6. colleagues and staff need access to company documentation, such as policies and procedures**

Yooma offers a hub of information where all or selected people can view one version of company documentation, saving everyone time and effort.

### **7. i need to keep sensitive personal information and payroll separate yet be able to have a holistic view of employees**

Yooma have dynamic integration capabilities and simplified API's available. Reports provide users with all information even when various production systems are used.

### **8. cannot use all our data in the way we need to from time to time**

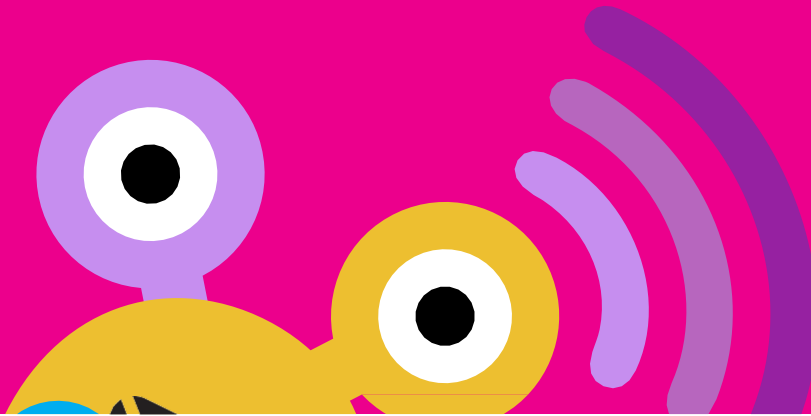
Yooma provides users (those with access rights) the ability to extract data to be used for company purposes.

### **9. i need to inform all, various groups or individuals of important notifications or urgent announcements**

Yooma provides Team leaders with the ability to send text, image and video messages to selected individuals or groups.

### **10. my staff are across multiple countries and cultures; how do I keep track of all the various holidays?**

Yooma provides an easy-to-use holiday feature which allows you to import all religious and cultural holidays, with a simplified planner that is available on your calendar dashboard.



## INFO SHEET



# SOME OF THE MONSTERS WE SLAY

### **11. is it available in my language?**

Yes!! Yooma is proudly South African and is available in various South African languages such as Afrikaans and Zulu and soon to add other African and European languages.

### **12. i need access to information and processes everywhere I go**

Yooma is cloud-based and accessible across the globe. It's securely backed up with your determined access rights. Most features are also available on mobile.

### **13. i cannot keep track of all my staff expenses!**

Yooma provides a super easy process to request and approve payments and claims, even to third parties. Reports can be used to control and monitor all activities and expenses.

### **14. i need to know what my staff's opinion is on certain matters**

Yooma have a comprehensive survey tool to obtain those preferences and opinions of all or specific groups and departments.

### **15. i want flexibility and the ability to choose my fields, data and company set-up that suits our needs**

Yooma is highly scalable and configurable. All aspects can be customised by yourself, such as departments, branches, various types of leaves, holidays, personal fields and documentation groupings, to name only a few.

### **16. i need customisation set-ups, reports and integrations for my unique business**

Yooma can be customised that suits the unique needs of large and corporate enterprises.







ooma

Slaying your Monsters

INTEGRATED – EVERY DAY – EVERYWHERE

 PLATINUM **SOFTWARE**